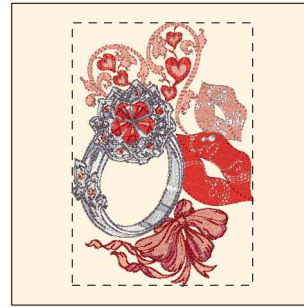




- 1. Bright White (Sul-R:1001)
- 2. Poppy (Sul-R:1317)
- 3. Cream (Sul-R:1022)
- 4. Salmon Peach (Sul-R:1259)
- 5. Brick (Sul-R:1081)
- 6. Wine (Sul-R:1312)
- 7. Rust (Sul-R:1181)
- 8. Butterfly Gold (Sul-R:567)
- 9. Red Jubilee (Sul-R:1263)
- 10. Bright White (Sul-R:1001)

**Romantic Gifts01-5x7.dst**  
4.89x6.60 inches; 49,084 stitches  
10 thread changes; 9 colors



- 1. Poppy (Sul-R:1317)
- 2. Salmon Peach (Sul-R:1259)
- 3. Bright White (Sul-R:1001)
- 4. (Sul-R:1326)
- 5. Brick (Sul-R:1081)
- 6. Rust (Sul-R:1181)
- 7. Red Jubilee (Sul-R:1263)
- 8. (Sul-R:1326)
- 9. Dk. Nickel Gray (Sul-R:1329)
- 10. Dk. Taupe (Sul-R:1179)

**Romantic Gifts02-5x7.dst**  
4.71x6.85 inches; 37,451 stitches  
10 thread changes; 9 colors



- 1. Poppy (Sul-R:1317)
- 2. Cream (Sul-R:1022)
- 3. Salmon Peach (Sul-R:1259)
- 4. Bright White (Sul-R:1001)
- 5. Rust (Sul-R:1181)
- 6. Med. Maple (Sul-R:1216)
- 7. Cream (Sul-R:1022)
- 8. (Sul-R:622)
- 9. Dk. Willow Green (Sul-R:1280)
- 10. Red Jubilee (Sul-R:1263)
- 11. Grass Green (Sul-R:1049)
- 12. Butterfly Gold (Sul-R:567)
- 13. Dk. Maple (Sul-R:1158)

**Romantic Gifts03-5x7.dst**  
4.87x6.73 inches; 52,134 stitches  
13 thread changes; 12 colors



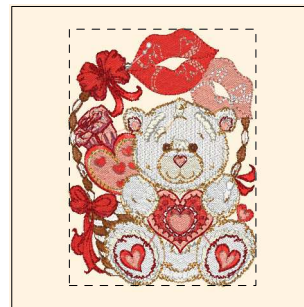
- 1. Bright White (Sul-R:1001)
- 2. Poppy (Sul-R:1317)
- 3. Cream (Sul-R:1022)
- 4. Salmon Peach (Sul-R:1259)
- 5. Rust (Sul-R:1181)
- 6. Med. Maple (Sul-R:1216)
- 7. Brick (Sul-R:1081)
- 8. Red Jubilee (Sul-R:1263)
- 9. Butterfly Gold (Sul-R:567)
- 10. Dk. Maple (Sul-R:1158)

**Romantic Gifts04-5x7.dst**  
4.87x6.43 inches; 43,539 stitches  
10 thread changes; 10 colors



- 1. Poppy (Sul-R:1317)
- 2. Salmon Peach (Sul-R:1259)
- 3. Bright White (Sul-R:1001)
- 4. Cream (Sul-R:1022)
- 5. Rust (Sul-R:1181)
- 6. Butterfly Gold (Sul-R:567)
- 7. Red Jubilee (Sul-R:1263)

**Romantic Gifts05-5x7.dst**  
4.85x6.73 inches; 45,105 stitches  
7 thread changes; 7 colors



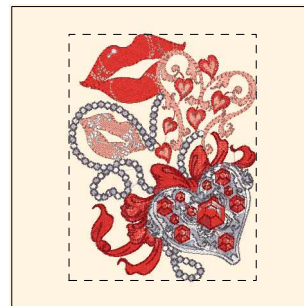
- 1. Bright White (Sul-R:1001)
- 2. Poppy (Sul-R:1317)
- 3. Cream (Sul-R:1022)
- 4. Salmon Peach (Sul-R:1259)
- 5. Brick (Sul-R:1081)
- 6. Wine (Sul-R:1312)
- 7. Rust (Sul-R:1181)
- 8. Bright White (Sul-R:1001)
- 9. Dk. Maple (Sul-R:1158)
- 10. Butterfly Gold (Sul-R:567)
- 11. Red Jubilee (Sul-R:1263)

**Romantic Gifts06-5x7.dst**  
4.87x6.69 inches; 55,286 stitches  
11 thread changes; 10 colors



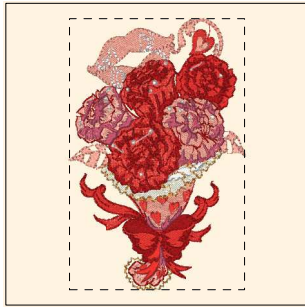
- 1. (Sul-R:1326)
- 2. Cream (Sul-R:1022)
- 3. Poppy (Sul-R:1317)
- 4. Salmon Peach (Sul-R:1259)
- 5. Bright White (Sul-R:1001)
- 6. Brick (Sul-R:1081)
- 7. Rust (Sul-R:1181)
- 8. (Sul-R:622)
- 9. Red Jubilee (Sul-R:1263)
- 10. Butterfly Gold (Sul-R:567)
- 11. Dk. Taupe (Sul-R:1179)

**Romantic Gifts07-5x7.dst**  
4.88x6.93 inches; 60,077 stitches  
11 thread changes; 11 colors



- 1. Poppy (Sul-R:1317)
- 2. Salmon Peach (Sul-R:1259)
- 3. Bright White (Sul-R:1001)
- 4. Rust (Sul-R:1181)
- 5. Dk. Nickel Gray (Sul-R:1329)
- 6. Dk. Taupe (Sul-R:1179)
- 7. Red Jubilee (Sul-R:1263)

**Romantic Gifts08-5x7.dst**  
4.89x6.41 inches; 39,992 stitches  
7 thread changes; 7 colors



- 1. Cream (Sul-R:1022)
- 2. Poppy (Sul-R:1317)
- 3. Salmon Peach (Sul-R:1259)
- 4. Red Jubilee (Sul-R:1263)
- 5. Bright White (Sul-R:1001)
- 6. Poppy (Sul-R:1317)
- 7. Brick (Sul-R:1081)
- 8. Butterfly Gold (Sul-R:567)

**Romantic Gifts09-5x7.dst**

4.57x7.07 inches; 45,325 stitches  
8 thread changes; 7 colors



- 1. (Sul-R:1326)
- 2. Cream (Sul-R:1022)
- 3. Poppy (Sul-R:1317)
- 4. Salmon Peach (Sul-R:1259)
- 5. Med. Maple (Sul-R:1216)
- 6. Bright White (Sul-R:1001)
- 7. Brick (Sul-R:1081)
- 8. Red Jubilee (Sul-R:1263)
- 9. Steel Gray (Sul-R:1011)
- 10. Butterfly Gold (Sul-R:567)

**Romantic Gifts10-5x7.dst**

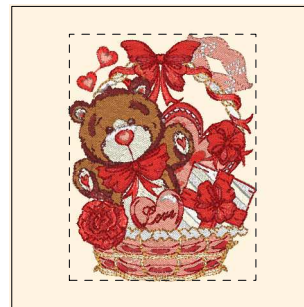
4.31x6.85 inches; 38,633 stitches  
10 thread changes; 10 colors



- 1. Poppy (Sul-R:1317)
- 2. Salmon Peach (Sul-R:1259)
- 3. Brick (Sul-R:1081)
- 4. Rust (Sul-R:1181)
- 5. Bright White (Sul-R:1001)
- 6. Med. Maple (Sul-R:1216)
- 7. Cream (Sul-R:1022)
- 8. Dk. Maple (Sul-R:1158)
- 9. Dk. Willow Green (Sul-R:1280)
- 10. Red Jubilee (Sul-R:1263)
- 11. Butterfly Gold (Sul-R:567)
- 12. Grass Green (Sul-R:1049)

**Romantic Gifts11-5x7.dst**

4.87x6.74 inches; 53,416 stitches  
12 thread changes; 12 colors



- 1. Bright White (Sul-R:1001)
- 2. Cream (Sul-R:1022)
- 3. Poppy (Sul-R:1317)
- 4. Salmon Peach (Sul-R:1259)
- 5. Tan (Sul-R:1126)
- 6. Cream (Sul-R:1022)
- 7. Rust (Sul-R:1181)
- 8. Wine (Sul-R:1312)
- 9. Bright White (Sul-R:1001)
- 10. Red Jubilee (Sul-R:1263)
- 11. Butterfly Gold (Sul-R:567)

**Romantic Gifts12-5x7.dst**

4.87x6.43 inches; 54,952 stitches  
11 thread changes; 9 colors