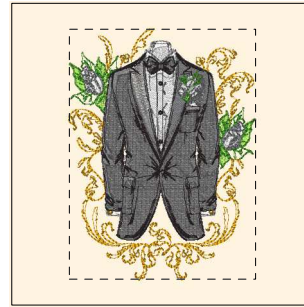




1. Bright White (Sul-R:1001)
2. Pastel Coral (Sul-R:1016)
3. Tawny Tan (Sul-R:1055)
4. (Sul-R:1326)
5. Salmon Peach (Sul-R:1259)
6. (Sul-R:1326)
7. Khaki (Sul-R:1212)
8. Yellow Orange (Sul-R:1137)
9. Med. Maple (Sul-R:1216)
10. Mine Gold (Sul-R:1025)
11. Steel Gray (Sul-R:1011)

Wedding01-5x7.dst

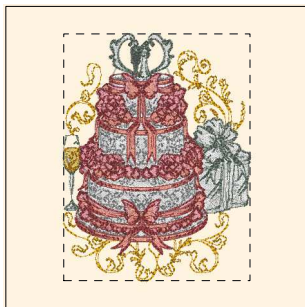
4.73x6.86 inches; 45,481 stitches
11 thread changes; 10 colors



1. Bright White (Sul-R:1001)
2. (Sul-R:1326)
3. Charcoal Gray (Sul-R:1220)
4. Lime Green (Sul-R:1510)
5. Gray (Sul-R:1219)
6. Tawny Tan (Sul-R:1055)
7. Grass Green (Sul-R:1049)
8. Yellow Orange (Sul-R:1137)
9. Mine Gold (Sul-R:1025)
10. Black Cherry (Sul-R:1183)

Wedding02-5x7.dst

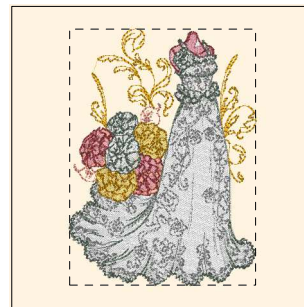
4.86x6.52 inches; 34,406 stitches
10 thread changes; 10 colors



1. Bright White (Sul-R:1001)
2. Salmon Peach (Sul-R:1259)
3. Pastel Coral (Sul-R:1016)
4. Tawny Tan (Sul-R:1055)
5. (Sul-R:1326)
6. Charcoal Gray (Sul-R:1220)
7. Khaki (Sul-R:1212)
8. Yellow Orange (Sul-R:1137)
9. Med. Maple (Sul-R:1216)
10. Mine Gold (Sul-R:1025)
11. Steel Gray (Sul-R:1011)

Wedding03-5x7.dst

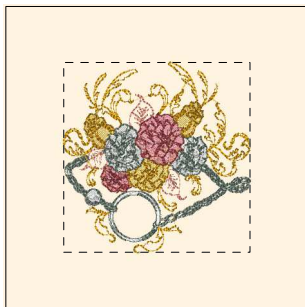
4.86x6.44 inches; 60,446 stitches
11 thread changes; 11 colors



1. Bright White (Sul-R:1001)
2. Pastel Coral (Sul-R:1016)
3. Tawny Tan (Sul-R:1055)
4. (Sul-R:1326)
5. Salmon Peach (Sul-R:1259)
6. Khaki (Sul-R:1212)
7. Yellow Orange (Sul-R:1137)
8. Med. Maple (Sul-R:1216)
9. Mine Gold (Sul-R:1025)
10. Steel Gray (Sul-R:1011)

Wedding04-5x7.dst

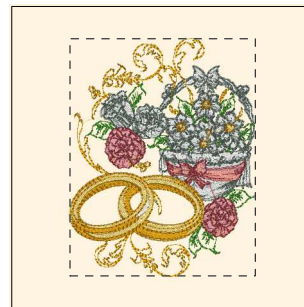
4.85x6.67 inches; 43,535 stitches
10 thread changes; 10 colors



1. Bright White (Sul-R:1001)
2. Salmon Peach (Sul-R:1259)
3. Pastel Coral (Sul-R:1016)
4. Tawny Tan (Sul-R:1055)
5. (Sul-R:1326)
6. Khaki (Sul-R:1212)
7. Yellow Orange (Sul-R:1137)
8. Med. Maple (Sul-R:1216)
9. Mine Gold (Sul-R:1025)

Wedding05-5x7.dst

4.87x4.94 inches; 24,733 stitches
9 thread changes; 9 colors



1. Bright White (Sul-R:1001)
2. Salmon Peach (Sul-R:1259)
3. Pastel Coral (Sul-R:1016)
4. Tawny Tan (Sul-R:1055)
5. (Sul-R:1326)
6. Khaki (Sul-R:1212)
7. Yellow Orange (Sul-R:1137)
8. Grass Green (Sul-R:1049)
9. Med. Maple (Sul-R:1216)
10. Mine Gold (Sul-R:1025)

Wedding06-5x7.dst

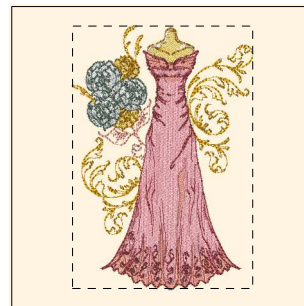
4.83x6.19 inches; 43,488 stitches
10 thread changes; 10 colors



1. Bright White (Sul-R:1001)
2. Tawny Tan (Sul-R:1055)
3. Cornsilk (Sul-R:502)
4. (Sul-R:1326)
5. Charcoal Gray (Sul-R:1220)
6. Lime Green (Sul-R:1510)
7. (Sul-R:1326)
8. Khaki (Sul-R:1212)
9. Yellow Orange (Sul-R:1137)
10. Grass Green (Sul-R:1049)
11. Mine Gold (Sul-R:1025)
12. Black Cherry (Sul-R:1183)

Wedding07-5x7.dst

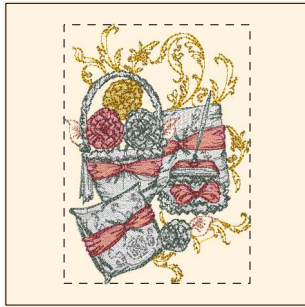
4.86x6.83 inches; 34,250 stitches
12 thread changes; 11 colors



1. Bright White (Sul-R:1001)
2. Salmon Peach (Sul-R:1259)
3. Pastel Coral (Sul-R:1016)
4. Tawny Tan (Sul-R:1055)
5. (Sul-R:1326)
6. Khaki (Sul-R:1212)
7. Yellow Orange (Sul-R:1137)
8. Med. Maple (Sul-R:1216)
9. Mine Gold (Sul-R:1025)

Wedding08-5x7.dst

4.70x6.85 inches; 33,458 stitches
9 thread changes; 9 colors



- 1. Bright White (Sul-R:1001)
- 2. Salmon Peach (Sul-R:1259)
- 3. Pastel Coral (Sul-R:1016)
- 4. Tawny Tan (Sul-R:1055)
- 5. (Sul-R:1326)
- 6. Khaki (Sul-R:1212)
- 7. Yellow Orange (Sul-R:1137)
- 8. Med. Maple (Sul-R:1216)
- 9. Mine Gold (Sul-R:1025)
- 10. Steel Gray (Sul-R:1011)

Wedding09-5x7.dst

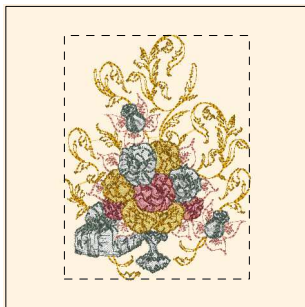
4.85x6.74 inches; 45,829 stitches
10 thread changes; 10 colors



- 1. Bright White (Sul-R:1001)
- 2. Tawny Tan (Sul-R:1055)
- 3. Cornsilk (Sul-R:502)
- 4. (Sul-R:1326)
- 5. Charcoal Gray (Sul-R:1220)
- 6. Lime Green (Sul-R:1510)
- 7. Khaki (Sul-R:1212)
- 8. Yellow Orange (Sul-R:1137)
- 9. Grass Green (Sul-R:1049)
- 10. Mine Gold (Sul-R:1025)
- 11. Black Cherry (Sul-R:1183)

Wedding10-5x7.dst

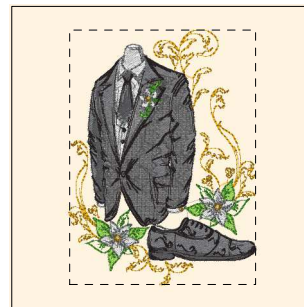
4.85x6.63 inches; 32,726 stitches
11 thread changes; 11 colors



- 1. Bright White (Sul-R:1001)
- 2. Salmon Peach (Sul-R:1259)
- 3. Pastel Coral (Sul-R:1016)
- 4. Tawny Tan (Sul-R:1055)
- 5. (Sul-R:1326)
- 6. Khaki (Sul-R:1212)
- 7. Yellow Orange (Sul-R:1137)
- 8. Med. Maple (Sul-R:1216)
- 9. Mine Gold (Sul-R:1025)

Wedding11-5x7.dst

4.83x6.35 inches; 31,339 stitches
9 thread changes; 9 colors



- 1. Bright White (Sul-R:1001)
- 2. Tawny Tan (Sul-R:1055)
- 3. (Sul-R:1326)
- 4. Charcoal Gray (Sul-R:1220)
- 5. Lime Green (Sul-R:1510)
- 6. Gray (Sul-R:1219)
- 7. Yellow Orange (Sul-R:1137)
- 8. Grass Green (Sul-R:1049)
- 9. Mine Gold (Sul-R:1025)
- 10. Black Cherry (Sul-R:1183)

Wedding12-5x7.dst

4.86x6.64 inches; 35,625 stitches
10 thread changes; 10 colors